



Local Internet Registry Fundamentals

Exam Guide

Local Internet Registry - Fundamentals Exam Guide

The Local Internet Registry (LIR) Fundamentals certification helps LIRs understand their role in relation to the RIPE NCC and equips them with the knowledge to perform their tasks more effectively.

Recommended Knowledge:

It is recommended that candidates have at least two months of experience as an appointed LIR contact at an operational level and/or have participated in the LIR Fundamentals training course, or have taken the LIR Fundamentals e-learning course.

The exam validates the ability to:

- Manage an LIR's Internet number resources
- Describe procedures for requesting, distributing, registering, sponsoring, and transferring these resources
- Identify support channels and opportunities for engagement within the Internet ecosystem.

Exam Structure:



35

Number of questions



30
minutes

Time limit



70

Passing score

Each LIR receives three exam vouchers per year. Registered LIR contacts can claim these vouchers in the RIPE NCC Academy Dashboard.

Types of Questions

The exam contains different types of questions:

Multiple choice: Has one correct response and three incorrect responses.

Multiple response: Has two or more correct responses out of five or more alternatives.

Unanswered questions are scored as incorrect.

Unscored Items:

The exam may contain items that are included in the exam to trial run new exam questions for other RIPE NCC certifications. These items are not identified and will not count towards your score. Only the scored items are worth 100% of your score.

Exam Content Distribution:

| Domain | Percent of Exam |
|--|-----------------|
| Understanding the Internet Ecosystem and Internet Registries | 32% |
| Managing Resources as an LIR | 36% |
| Finding Help and Support | 32% |

How can you study for the exam?

E-learning course

Taking our free online self-paced LIR Fundamentals e-learning course in the RIPE NCC Academy is the best way to prepare yourself for the LIR Fundamentals exam. The course consists of five modules and takes you about three hours to complete.

- ✔ Covers all exam knowledge and skills
- ✔ Available for free



Go to the RIPE NCC Academy

Face-to-face training course

RIPE NCC members can attend an in-person LIR training course. We offer courses throughout our service region, and attending a course is a great way to learn directly from our trainers and your peers.

- ⚠ Partially covers exam knowledge and skills
- ⚠ Courses for members only

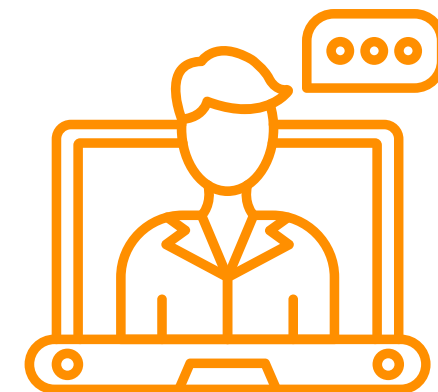


Register for a face-to-face course

Webinars

We also offer several live online webinars on LIR-related topics. This is an easy way to interact directly with our trainers and ask them your questions!

- ⚠ Partially covers exam knowledge and skills
- ✔ Live webinars are available to all



Register for a webinar

Exam Outline

To pass the exam, you must possess the minimum level of knowledge, skills and abilities in understanding and performing the following:

1. Understanding the Internet Ecosystem and Internet Registries

1.1. Introduction to the Internet Ecosystem

1.1.1 Identify the roles and responsibilities of each stakeholder of the Internet Registry System

1.1.2 Explain how Internet number resources are distributed across the world

1.2. Regional Internet Registries (RIR)

1.2.1 Contrast the distinct roles and decision-making functions of the RIPE community and the RIPE NCC

1.2.2 Identify the main benefits of being a RIPE NCC Member

1.2.3 Describe the process of enrolling as a member

1.3. Local Internet Registries (LIR)

1.3.1 Differentiate between an SSO account and LIR portal access

1.3.2 Differentiate the data in the RIPE Database maintained by RIPE NCC and the LIRs

1.3.3 Differentiate the data in the LIR Portal maintained by RIPE NCC and the LIRs

2. Managing Resources as an LIR

2.1. Requesting and Sponsoring Resources

2.1.1 Explain the Internet resource lifecycle

2.1.2 Identify the implications of the IPv4 run-out for LIRs

2.1.3 Differentiate between the resources that can be requested

2.1.4 Outline the specific steps for requesting each resource type

2.1.5 Explain the responsibilities as a sponsoring LIR

2.2. Distributing and Registering Resources

2.2.1 Identify the principles guiding the distribution of IP addresses

2.3. Transferring Resources

2.3.1 Identify the process and requirements of the different types of resource transfers

Exam Outline

3. Finding Help and Support

3.1. Assisted Registry Check (ARC)

3.1.1 Explain the objectives of an ARC

3.1.2 Explain the procedure of an ARC

3.2. Handling Abuse

3.2.1 Explain the purpose of setting up an abuse desk

3.2.2 Explain how to set up and operate an abuse desk

3.2.3 Describe the roles and responsibilities of both the RIPE NCC member and the RIPE NCC in handling abuse-related issues

3.3. Shaping Policies through RIPE

3.3.1 Describe the main principles of the Policy Development Process

3.4. Other Services

3.4.1 Identify services the RIPE NCC offers

3.4.2 Identify the ways a member can participate as part of the RIPE community

Learning Resources

1. Understanding the Internet Ecosystem and Internet Registries

1.1. Introduction to the Internet Ecosystem

| | RIPE NCC Academy LIR Fundamentals [3 hours] | Training Course LIR Fundamentals [1 day] | Webinar Welcome to the RIPE NCC [1 hour] |
|---|---|--|--|
| 1.1.1 Identify the roles and responsibilities of each stakeholder of the Internet Registry System | Module 1.3, 2.1, 2.3 | Yes | Partially |
| 1.1.2 Explain how Internet number resources are distributed across the world | Module 1.3 | Yes | Yes |

1.2. Regional Internet Registries (RIR)

| | | | |
|--|------------|-----------|-----|
| 1.2.1 Contrast the distinct roles and decision-making functions of the RIPE community and the RIPE NCC | Module 2.1 | Yes | Yes |
| 1.2.2 Identify the main benefits of being a RIPE NCC Member | Module 2.2 | Partially | Yes |
| 1.2.3 Describe the process of enrolling as a member | Module 2.2 | | Yes |

1.3. Regional Internet Registries (RIR)

| | | | |
|---|------------|-----------|-----|
| 1.3.1 Differentiate between an SSO account and LIR portal access | Module 2.3 | Partially | Yes |
| 1.3.2 Differentiate the data in the RIPE Database maintained by RIPE NCC and the LIRs | Module 2.3 | Partially | |
| 1.3.3 Differentiate the data in the LIR Portal maintained by RIPE NCC and the LIRs | Module 2.3 | Partially | |

Learning Resources

2. Managing Resources as an LIR

2.1. Requesting and Sponsoring Resources

| | RIPE NCC Academy LIR Fundamentals [3 hours] | Training Course LIR Fundamentals [1 day] | Webinar Welcome to the RIPE NCC [1 hour] |
|--|--|---|---|
| 2.1.1 Explain the Internet resource lifecycle | Module 3.2 | Yes | |
| 2.1.2 Identify the implications of the IPv4 run-out for LIRs | Module 3.2 | Partially | |
| 2.1.3 Differentiate between the resources that can be requested | Module 3.2 | Yes | Yes |
| 2.1.4 Assess the type of resource required for your organisation's needs | Module 3.2 | Partially | |
| 2.1.5 Outline the specific steps for requesting each resource type | Module 3.2 | Yes | |
| 2.1.6 Explain the responsibilities as a sponsoring LIR | Module 3.2 | | |

2.2. Distributing and Registering Resources

| | | | |
|--|------------|-----|--|
| 2.2.1 Identify the principles guiding the distribution of IP addresses | Module 3.3 | Yes | |
|--|------------|-----|--|

2.3. Transferring Resources

| | | | |
|--|------------|-----|--|
| 2.3.1 Identify the process and requirements of the different types of resource transfers | Module 4.1 | Yes | |
|--|------------|-----|--|

Learning Resources

3. Finding Help and Support

3.1. Assisted Registry Checks (ARC)

| | RIPE NCC Academy LIR Fundamentals [3 hours] | Training Course LIR Fundamentals [1 day] | Webinar Welcome to the RIPE NCC [1 hour] |
|--|--|---|---|
| 3.1.1 Explain the objectives of an ARC | Module 5.1 | Yes | |
| 3.1.2 Explain the procedure of an ARC | Module 5.1 | Partially | |

3.2. Handling Abuse

| | | | |
|--|------------|--|--|
| 3.2.1. Explain the purpose of setting up an abuse desk | Module 5.2 | | |
| 3.2.2. Explain how to set up and operate an abuse desk | Module 5.2 | | |
| 3.2.3. Describe the roles and responsibilities of both the RIPE NCC member and the RIPE NCC in handling abuse-related issues | Module 5.2 | | |

3.3. Shaping Policies Through RIPE

| | | | |
|---|------------|-----|--|
| 3.3.1. Describe the main principles of the Policy Development Process | Module 5.4 | Yes | |
|---|------------|-----|--|

3.4. Other Services

| | | | |
|---|------------|-----------|-----------|
| 3.4.1. Identify services the RIPE NCC offers | Module 5.3 | Partially | Yes |
| 3.4.2. Identify the ways a member can participate as part of the RIPE community | Module 5.4 | Partially | Partially |

Support

If you have any questions regarding the exam, please send an email to **Exams Support**

Schedule Your Exam

To schedule your exam, please visit:
<https://exams.ripe.net/>